

Schwab Indexed Retirement Trust Funds[®] (SIRT Funds)

Collective trust funds maintained by
Charles Schwab Bank

Performance reports as of December 31, 2017

The logo consists of a blue square containing the text "charles" in a white, lowercase, serif font, and "SCHWAB" in a white, uppercase, sans-serif font below it.

charles
SCHWAB

Own your tomorrow[®]

Table of contents

Schwab target date solutions overview

Capital markets summary

SIRT funds performance & attribution review

Underlying strategy performance

SIRT funds update

Appendix



Schwab Target Date Solutions

*Includes Schwab Managed Retirement Trust Funds ("SMRT") and Schwab Indexed Retirement Trust Funds ("SIRT"), collective trusts maintained by Charles Schwab Bank, and Schwab Target Funds and Schwab Target Index Funds, mutual funds maintained by Charles Schwab Investment Management, Inc.

Schwab's target date fund solutions

	Schwab Managed Retirement Trust Funds™ (SMRT Funds)	Schwab Indexed Retirement Trust Funds® (SIRT Funds)	Schwab Target Funds	Schwab Target Index Funds
Structure	Collective Trust Funds		Mutual Funds	
Target market	Designed exclusively for qualified retirement plans		Designed for retail investors and employer-sponsored retirement plans	
Underlying investments	Sub-Advised		Proprietary and Sub-Advised/Third Party	Proprietary
Oversight structure	Maintained by Schwab Bank as trustee for the funds		Maintained and managed by CSIM	
Investment style	Active/Passive	Passive	Active/Passive	Passive
AUM (\$MM)	\$11,909	\$2,449	\$4,085	\$380
Inception	10/1/2002	1/05/2009	7/01/2005	8/25/2016
Net expense	0.33%–0.89% Six unit classes	0.08% One unit class	0.33%–0.76% ¹ One share class	0.08% ² One share class

As of December 31, 2017.

Investment minimums may apply.

¹As of the most recent prospectus, the investment adviser and its affiliates have agreed to limit the total annual fund operating expenses (excluding interest, taxes, and certain non-routine expenses) of each of the funds to 0.00% for so long as the investment advisor serves as the advisor to the fund. This agreement may only be amended or terminated with the approval of a fund's Board of Trustees. This agreement to limit the total annual fund operating expenses is limited to the fund's direct operating expenses and, therefore, does not apply to acquired fund fees and expenses (AFFE), which are indirect expenses incurred by the fund through its investments in the underlying funds.

²As of the most recent prospectus, the investment adviser and its affiliates have agreed to limit the total annual fund operating expenses (including acquired fund fees and expenses (AFFEs), but excluding interest, taxes and certain non-routine expenses) of each of the funds 0.08% for the Institutional Share class for so long as the investment adviser serves as adviser to the funds. This agreement may only be amended or terminated with the approval of a fund's Board of Trustees. AFFEs are indirect expenses incurred by the fund through its investments in the underlying funds.

Investment management teams share accountability

Collaborative management by dedicated teams coupled with institutional oversight.

CSIM Multi-Asset Strategic Leadership

- Collaborates with investment teams
- Prioritizes strategic portfolio needs and research agenda

Asset Allocation Research

- Annual capital markets assumptions
- Glide path review
- Asset class review
- Scenario modeling, stress tests, real data comparison

Portfolio Management

- Evaluates research and develops recommendations
- Implements decisions, maintains allocations, rebalancing and cash flow management
- Accountable for adherence to objectives and guidelines and fund performance

Sub-Advisor Oversight¹

- Thorough ongoing due diligence by experienced analysts with a dedicated focus
- Utilize quantitative and qualitative criteria to identify best in class strategies
- Present strategies that best fit portfolio needs

Investment Risk Oversight

- An objective set of eyes, specifically focused on identifying and reducing risk

Investment Committees²

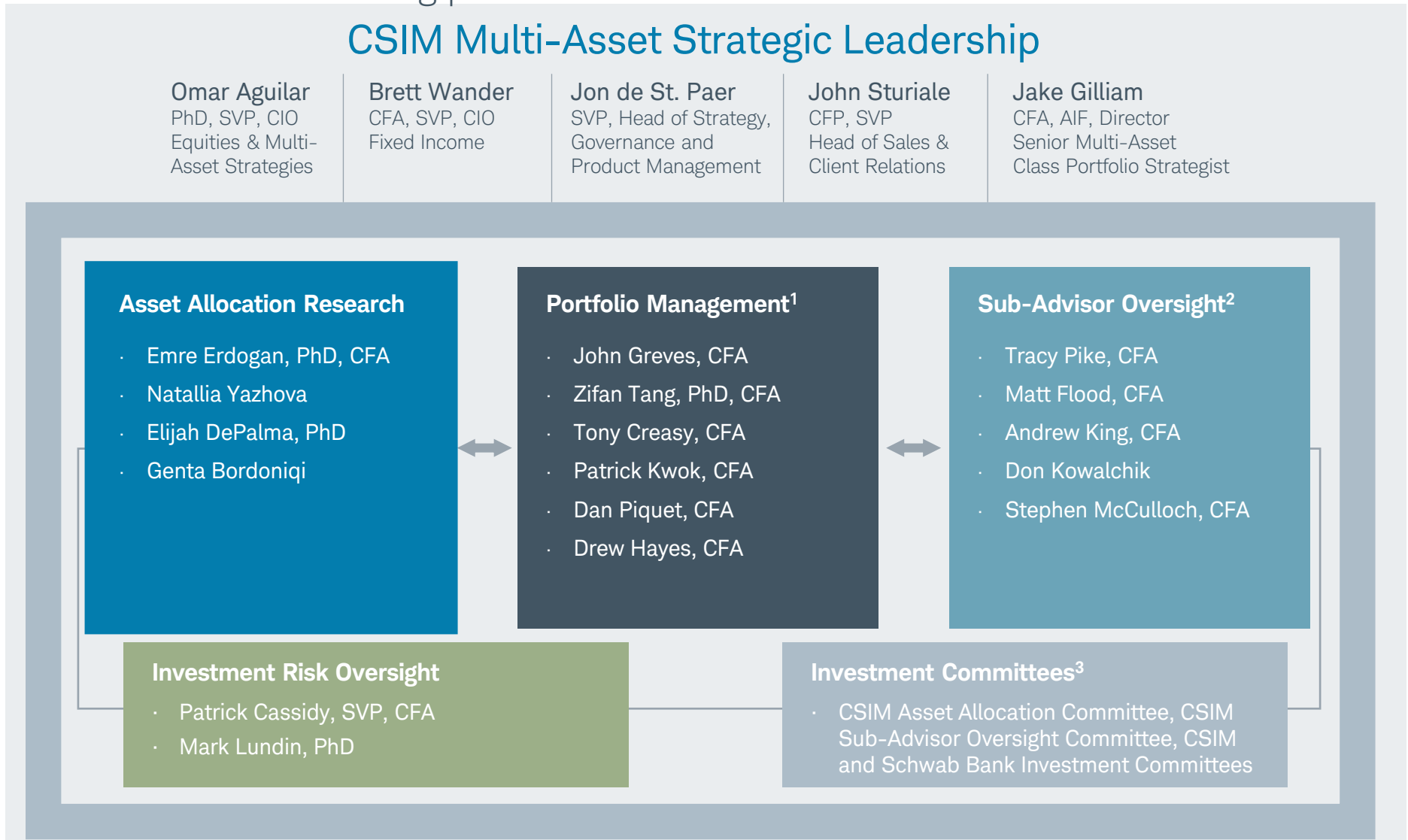
- Oversee all decisions to ensure that processes are properly followed

¹Sub-Advisor Oversight provides direct oversight of all sub-advised and third-party strategies.

²For collective trust funds, recommendations are given to the Charles Schwab Bank's Collective Trust Fund Administrative Committee and Investment Committee for final decision and implementation. (0117-SAPY)

An experienced investment management team

Our approach combines a set of diverse perspectives that **aligns your interests** with a robust and scalable investing process.



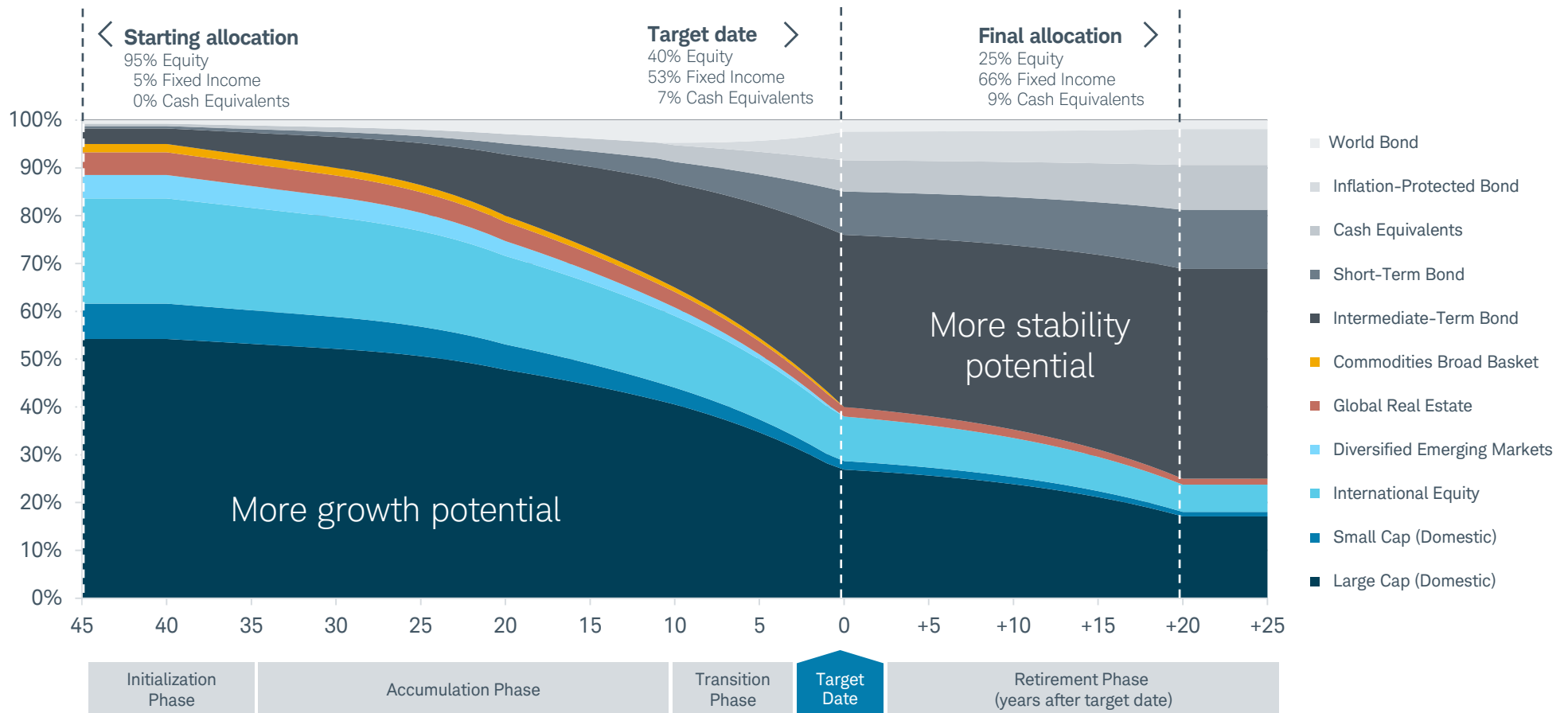
¹ Zifan Tang, Patrick Kwok, and Drew Hayes manage both the Schwab Target Funds and Schwab Target Index Funds. Tony Creasy and Dan Piquet manage the SMRT and SIRT Funds.

² Sub-Advisor Oversight provides direct oversight of all sub-advised and third-party strategies.

³ For collective trust funds, recommendations are given to the Charles Schwab Bank's Collective Trust Fund Administrative Committee and Investment Committee for final decision and implementation.

Our glide path has been designed with retirement participants in mind

SIRT Funds glide path (and underlying asset classes)

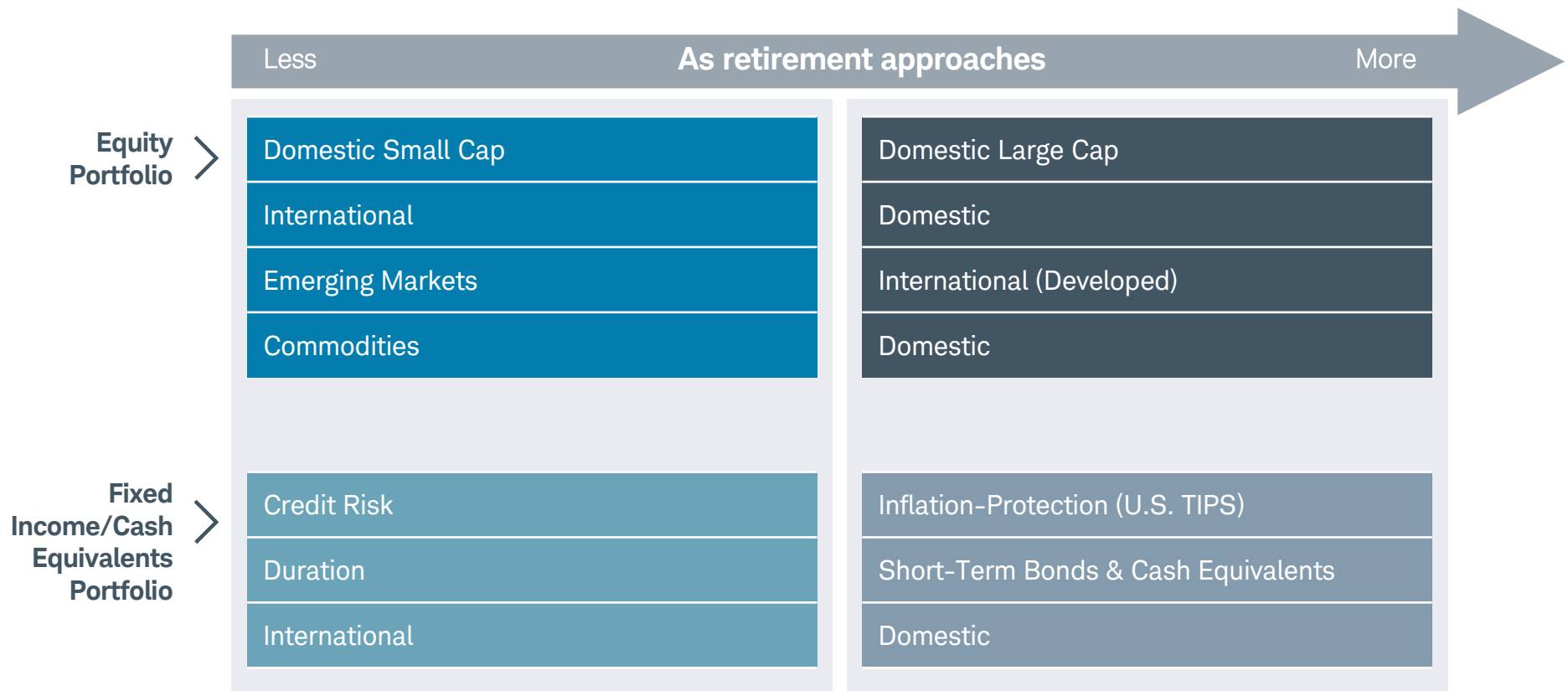


The values of the funds will fluctuate up to and after the target dates. There is no guarantee the funds will provide adequate income at or through retirement. Asset diversification and allocation strategies do not ensure a profit and cannot protect against losses in a declining market.

Equity asset classes include Domestic Equity, International Equity, Diversified Emerging Markets, Global Real Estate and Commodities. Fixed Income asset classes include Intermediate-Term Bond, Short-Term Bond, Cash Equivalents, Inflation-Protected Bond and World Bond.

(0117-SAPY)

Key risks are potentially reduced as retirement approaches and beyond



SIRT Funds underlying asset classes

ASSET CLASS	CORRESPONDING INDEX	FUND INVESTMENT	TOTAL UNDERLYING FUND AUM (\$MM) ¹
EQUITY			
Domestic Equity (Large Cap)	Russell 1000 Index	BNY Mellon Large Cap Stock Index Fund Instl	\$14,201
Domestic Equity (Small Cap)	Russell 2000 Index	BNY Mellon Small Cap Stock Index Fund Instl	\$3,415
International Equity	MSCI EAFE Index (Net)	BNY Mellon Intl Stock Index Fund Instl	\$23,052
Diversified Emerging Markets	MSCI Emerging Markets Index (Net)	SSgA Emerging Markets Index Fund A	\$56,580
Global Real Estate	FTSE EPRA/NAREIT Developed Index (Net)	BlackRock Developed Real Estate Index Fund E	\$2,500
Commodities Broad Basket	Bloomberg Commodity Index	BlackRock Commodity Index Daily Fund E	\$3,500
FIXED INCOME			
Short-Term Bond	Bloomberg Barclays U.S. Government/Credit: 1-3 Years Index	SSgA U.S. Short-Term Government/Credit Bond Index Fund A	\$3,610
Intermediate-Term Bond	Bloomberg Barclays U.S. Aggregate Bond Index	BNY Mellon U.S. Aggregate Bond Index Fund Instl	\$31,972
Inflation-Protected Bond (U.S. TIPS)	Bloomberg Barclays U.S. Treasury Inflation Protected Securities (TIPS) Index	BlackRock U.S. TIPS Index Fund E	\$50,000
World Bond	Bloomberg Barclays Global Aggregate Bond ex-US Hedged Index	BlackRock Global Aggregate Bond Fund Ex-USD	\$1,260
CASH EQUIVALENTS			
Cash Equivalents	Citigroup 3 Month T-Bill Index	State Street U.S. Government Short Term Investment Fund	\$11,474
Total			\$201,564

Investment
Managers >

BLACKROCK



STATE STREET
GLOBAL ADVISORS | **SSgA.**

As of September 30, 2017.

¹Includes firm assets in mutual funds, collective trust funds, and separate accounts as of September 30, 2017.

The DOL has provided general guidance for selecting and monitoring TDFs

“**Non-proprietary TDFs** could also offer advantages by including component funds that are managed by fund managers other than the TDF provider itself, thus **diversifying participants’ exposure** to one investment provider.”

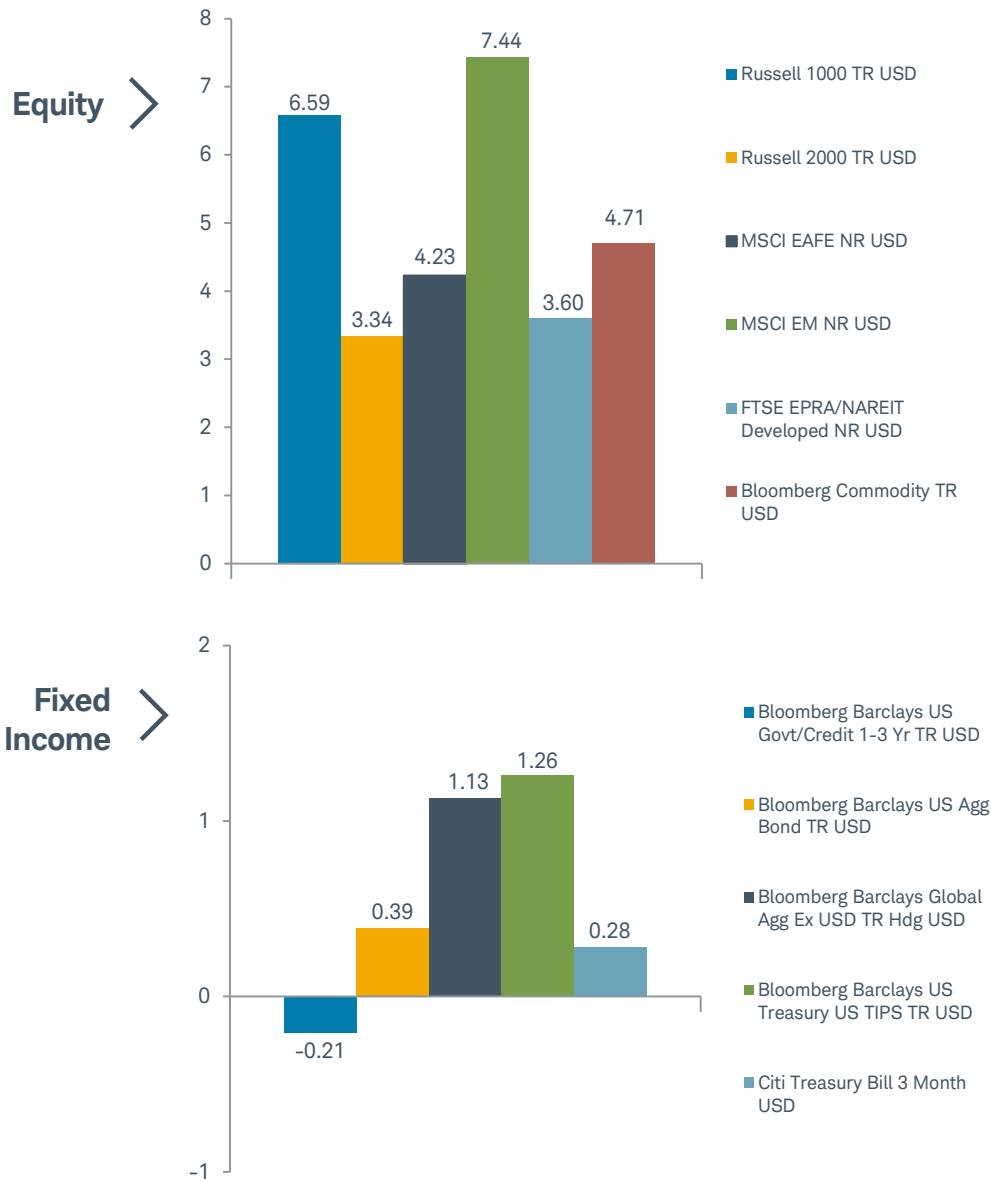
-U.S. DOL, 2013¹

		DOL Guidance Highlights
Evaluation	Objectively comparing and selecting TDFs	✓
	Evaluating non-proprietary or custom TDFs	✓
	Using resources to evaluate the selected TDFs	✓
Plan’s TDF Investment	Understanding the TDF’s investments	✓
	Review fees and investment expenses	✓
	Periodic review of selected TDFs	✓
Communications	Develop effective employee communications	✓
Recordkeeping	Documenting the process	✓

¹Source: U.S. Department of Labor, “Target Date Retirement Funds – Tips for ERISA Plan Fiduciaries,” February 2013. The complete fact sheet is available at www.dol.gov/ebsa/newsroom/fstdf.html.

Capital Markets Review

Capital markets summary—4th quarter 2017



An eventful 4th quarter kept equities soaring

For the quarter, equity markets benefited from continued strong global growth, passage of a major U.S. tax code overhaul and a quarter of a point raise in the Federal Funds Rate which met market expectations. Additionally, investors responded positively to the Federal Reserve decreasing their expectations on the unemployment rate and increasing their GDP forecast for 2017 and 2018 while keeping their inflation forecast the same. Overall, equity markets were positive for the quarter particularly emerging markets which outpaced most other equity markets followed by domestic large cap stocks and commodities. The rebound in commodities was led by energy and industrial metals. Conversely, global REITs and domestic small cap stocks, while posting positive returns, trailed most other equity markets. In general passively managed strategies outperformed actively managed strategies.

Within the U.S., low volatility and mostly positive economic data continued to boost the equity markets. Large cap equities out-performed small caps and growth continued to outperform value. Within sectors, consumer discretionary, information technology, and financials were the quarter's top three performers while utilities, health care and telecom services were the bottom three performers.

For the fourth quarter in a row, overseas equity markets posted strong relative performance due to low inflation, robust economic growth and low interest rates. Overall, emerging market equities out-performed developed international equities. Within both emerging markets and developed international equity markets, small caps outperformed large caps and growth outperformed value.

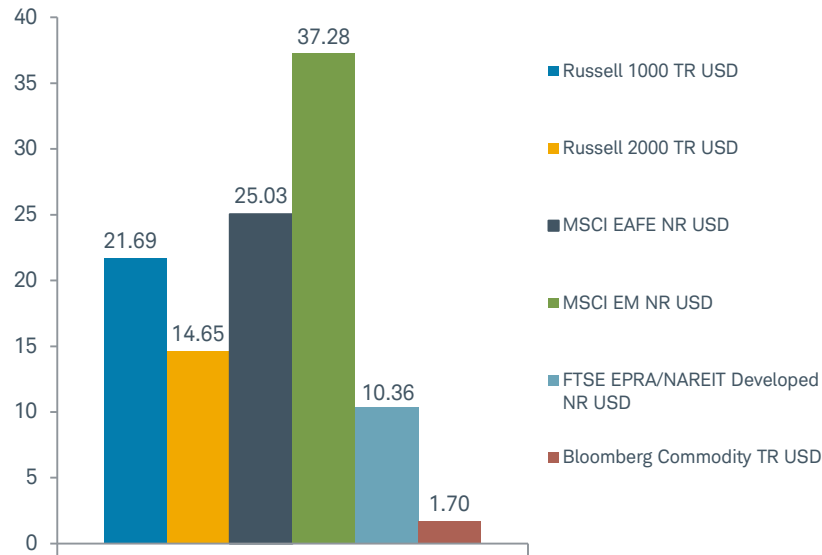
In the fixed income markets, volatility was low, rates were flat, and credit spreads tightened. U.S. TIPS and global bonds outperformed U.S. intermediate corporate bonds. TIPS strong performance was due to modest inflation expectations while global corporate bonds benefited from continued global economic momentum. In the U.S., highest beta securities in the lowest quality sectors generally performed the best. Short-term bonds generally underperformed longer term bonds due to rising short-term interest rates, a flattening yield curve and the prospect of further Federal Reserve actions.

Past performance is no guarantee of future results. Indexes are unmanaged, do not incur management fees, costs and expenses, and cannot be invested in directly.

Source: Return data provided by Morningstar, Inc. Content comes from a variety of sources including, but not limited to, Morningstar, CSIM, external investment managers. See Disclosures for additional detail.

Capital markets summary—1-year as of December 31, 2017

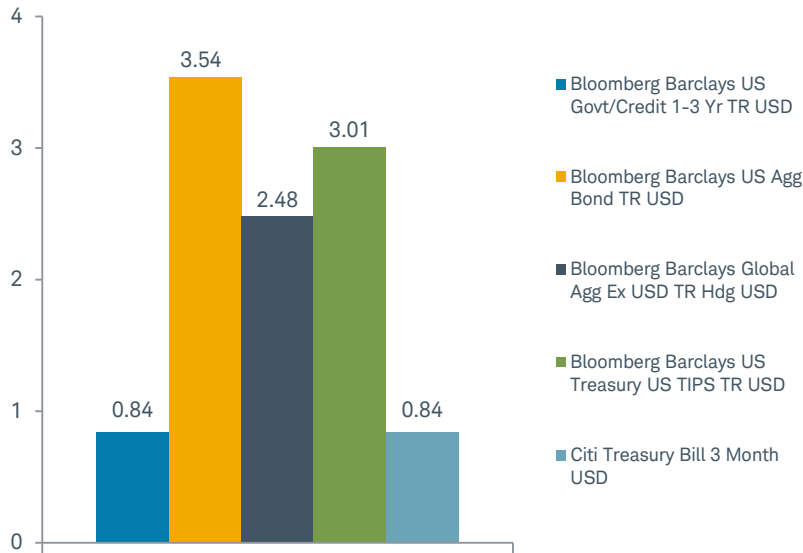
Equity >



Equities nine years strong

At the close of the bell on the last trading day of the year, 2017 became the ninth year of an equity bull market. For the first time in over a decade, all of the major global economies grew at the same time, this and strong earnings pushed many indices to record highs. Emerging Markets ended the year the clear winner, posting over a 37% return, followed by developed international markets at 25% and large cap domestic equities at 22%. Growth outperformed value and large cap equities outperformed small cap equities. In general passively managed strategies continued to outperform actively managed strategies. In the U.S., momentum significantly rewarded information technology, materials and health care. Conversely, telecom and energy did not perform as well and ended the year in negative territory. While in the 4th quarter commodities rebounded, for the year, commodities did not perform as well due to falling natural gas prices and negative returns for agricultural commodities. Within fixed income, solid global demand and low inflation helped U.S. intermediate term bonds perform well followed by TIPS and global bonds.

Fixed Income >



Past performance is no guarantee of future results. Indexes are unmanaged, do not incur management fees, costs and expenses, and cannot be invested in directly.

Source: Return data provided by Morningstar, Inc. Content comes from a variety of sources including, but not limited to, Morningstar, CSIM, external investment managers. See Disclosures for additional detail.

Performance and Attribution Review

Performance summary: 4Q2017

Fund	Performance	Performance vs. Custom Index ¹ (+/-) %	Category Percentile Ranking ²	Key Comments
SIRT 2010 Fund Cl I	2.33	-0.03	44	<p>For the 4th quarter, the funds ranked in the 45th percentile on average versus peers. Performance versus custom blended indices was in line with expectations.</p> <p>Dispersion for the Funds ranged from 3 bps to 11 bps and was primarily a result of fees. On a non-Fair Value Pricing basis, dispersion was within tracking error expectations.</p> <p>Glide Path Impact:</p> <p>Absolute performance from the glide path was positive, with later dated funds outperforming earlier dated funds due to a higher allocation to equities. Returns ranged from between 5.28% in the later dated funds to 2.33% in the nearer dated funds.</p> <p>Asset Allocation:</p> <p>Impact to the funds from asset allocation was mixed for the quarter. Versus peers, the funds' higher allocation to equities in the later dated funds positively contributed to returns. However, a relative underweight in emerging markets throughout all vintages detracted from returns given strong performance of emerging markets.</p>
SIRT 2015 Fund Cl I	2.43	-0.05	70	
SIRT 2020 Fund Cl I	2.95	-0.05	57	
SIRT 2025 Fund Cl I	3.60	-0.04	43	
SIRT 2030 Fund Cl I	4.05	-0.05	48	
SIRT 2035 Fund Cl I	4.42	-0.06	50	
SIRT 2040 Fund Cl I	4.77	-0.07	48	
SIRT 2045 Fund Cl I	5.01	-0.06	44	
SIRT 2050 Fund Cl I	5.15	-0.06	39	
SIRT 2055 Fund Cl I	5.29	-0.05	26	
SIRT 2060 Fund Cl I	5.28	-0.11	29	

As of December 31, 2017.

Past performance is no guarantee of future results. Investment return and principal value will fluctuate, and shares, when redeemed, may be worth more or less than original cost. Fund performance includes the reinvestment of all income and is presented net of all fees. The values of the target date fund will fluctuate up to and after the target date. There is no guarantee the funds will provide adequate income at or through retirement.

¹The custom indices are composite blended indices developed by Charles Schwab Investment Management, Inc. based on each fund's asset allocation. The components that make up a custom index may vary over time. See Disclosures for more detail.

²The percentile rank is the fund's total-return percentile rank relative to all funds that have the same Morningstar Category. The highest (or most favorable) percentile rank is 1 and the lowest (or least favorable) is 100.

Source: Charles Schwab Investment Management, Inc. and Morningstar, Inc.

Performance summary: 1-year

Fund	Performance	Performance vs. Custom Index ¹ (+/-) %	Category Percentile Ranking ²	Key Comments
SIRT 2010 Fund Cl I	9.37	-0.04	79	<p>The funds underperformed the peer group, ranking on average in the 78th percentile. Performance versus the funds' custom blended indices was in line with expectations.</p> <p>Dispersion for the 2010 to 2060 funds ranged from -5 bps to +1 bps.</p> <p>Glide Path Impact:</p> <p>Absolute performance from the glide path was positive, with later dated funds outperforming earlier dated funds due to a higher allocation to equities. All of the funds benefited from a strong equity market. Returns were between 20.64% in the later dated funds to 9.37% in the nearer dated funds.</p> <p>Asset Allocation:</p> <p>Relative to peers, the impact to the funds from asset allocation was negative for the 1-year period. Versus peers, the funds' relative underweight in developed international and emerging markets throughout all vintages, but more pronounced in shorter dated funds, detracted from performance given strong performance of international and emerging markets. Additionally, relative to peers, a higher allocation to small cap, REITs, and commodities detracted from performance in later dated funds.</p>
SIRT 2015 Fund Cl I	9.77	-0.05	86	
SIRT 2020 Fund Cl I	11.64	-0.05	77	
SIRT 2025 Fund Cl I	13.97	-0.01	74	
SIRT 2030 Fund Cl I	15.69	-0.03	77	
SIRT 2035 Fund Cl I	17.16	0.00	79	
SIRT 2040 Fund Cl I	18.52	-0.01	80	
SIRT 2045 Fund Cl I	19.45	0.01	81	
SIRT 2050 Fund Cl I	19.98	0.00	77	
SIRT 2055 Fund Cl I	20.51	0.01	71	
SIRT 2060 Fund Cl I	20.64	-0.05	73	

As of December 31, 2017.

Past performance is no guarantee of future results. Investment return and principal value will fluctuate, and shares, when redeemed, may be worth more or less than original cost. Fund performance includes the reinvestment of all income and is presented net of all fees. The values of the target date fund will fluctuate up to and after the target date. There is no guarantee the funds will provide adequate income at or through retirement.

¹The custom indices are composite blended indices developed by Charles Schwab Investment Management, Inc. based on each fund's asset allocation. The components that make up a custom index may vary over time. See Disclosures for more detail.

²The percentile rank is the fund's total-return percentile rank relative to all funds that have the same Morningstar Category. The highest (or most favorable) percentile rank is 1 and the lowest (or least favorable) is 100.

Source: Charles Schwab Investment Management, Inc. and Morningstar, Inc.
For institutional use only.

SIRT Funds' performance vs. Morningstar category peers

Morningstar Percentile Ranks vs. Peers								
As of December 31, 2017 (Net of fees)								
FUND	% EQUITY ¹	% PEER EQUITY	RANK IN MORNINGSTAR CATEGORY ^{2,3}			FUNDS IN CATEGORY		
			1 YR	3 YR	5 YR	1 YR	3 YR	5 YR
SIRT 2010 Morningstar Category: Target-Date 2000-2010 MF	37%	38%	79	63	59	110	91	69
SIRT 2015 Morningstar Category: Target-Date 2015 MF	39%	43%	86	71	66	122	93	65
SIRT 2020 Morningstar Category: Target-Date 2020 MF	49%	46%	77	61	33	234	189	151
SIRT 2025 Morningstar Category: Target-Date 2025 MF	61%	56%	74	51	26	208	166	132
SIRT 2030 Morningstar Category: Target-Date 2030 MF	70%	68%	77	51	28	234	189	151
SIRT 2035 Morningstar Category: Target-Date 2035 MF	77%	75%	79	51	28	208	166	132
SIRT 2040 Morningstar Category: Target-Date 2040 MF	84%	82%	80	49	24	234	189	151
SIRT 2045 Morningstar Category: Target-Date 2045 MF	89%	85%	81	47	15	208	166	131
SIRT 2050 Morningstar Category: Target-Date 2050 MF	92%	87%	77	43	14	230	184	145
SIRT 2055 Morningstar Category: Target-Date 2055 MF	94%	88%	71	34	--	206	159	--
SIRT 2060 Morningstar Category: Target-Date 2060+ MF	95%	88%	73	--	--	160	--	--

Past performance is no guarantee of future results. Investment return and principal value will fluctuate, and shares, when redeemed, may be worth more or less than original cost. Fund performance includes the reinvestment of all income and is presented net of all fees.

¹% Equity represents the 2017 Policy Allocation and includes all assets not classified as cash or fixed income.

²The percentile rank is the fund's total-return percentile rank relative to all funds that have the same Morningstar Category. The highest (or most favorable) percentile rank is 1 and the lowest (or least favorable) is 100. The top-performing fund in a category will always receive a rank of 1%.

Rank in Category is based on total returns which include reinvested dividends and capital gains, if any, and exclude sales charges.

³Ranks are for Unit Class I. Dashed indicate performance and rank data is not available.

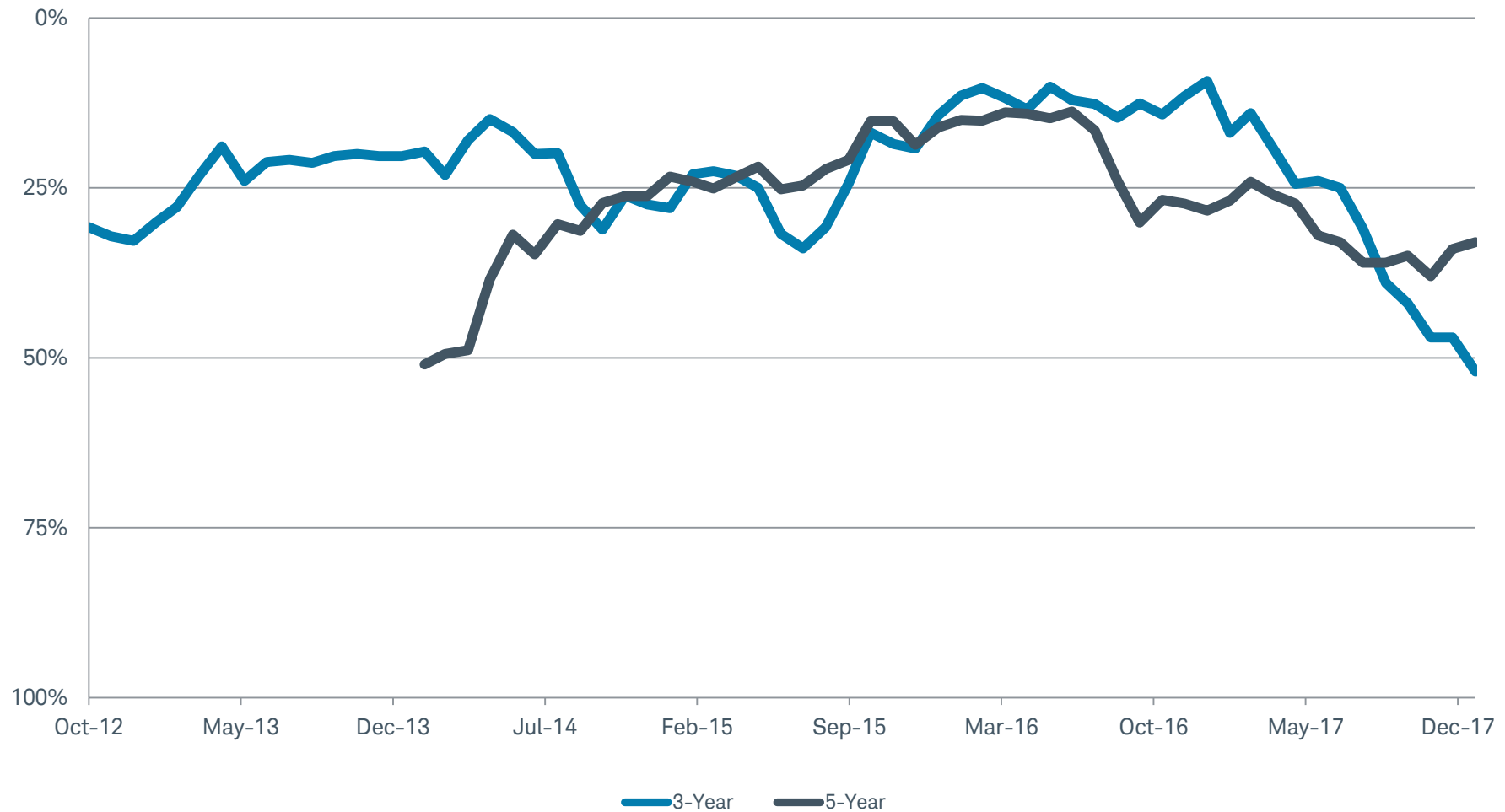
Source: Morningstar, Inc.

For institutional use only.

1-25	Top quartile
26-50	Second quartile
51-75	Third quartile
76-100	Bottom quartile

SIRT Funds – Rankings Summary

Average 3 and 5 Year Category Rankings as of December 31, 2017



Ranks are for Unit Class I.

SIRT Funds Performance

As of 12/31/2017	Exp. Ratio	Inception Date	1 Month %	1 Month Rank	3 Month %	3 Month Rank	YTD %	YTD Rank	1 Year %	1 Year Rank	3 Year %	3 Year Rank	5 Year %	5 Year Rank	10 Year %	10 Year Rank	Since Inception	3 Year Sharpe Ratio	3 Year Std. Deviation	Month End Net Asset Value (NAV) \$
SIRT 2010																				
Unit Class I	0.08	01/05/09	0.63	92	2.33	44	9.37	79	9.37	79	4.88	63	5.81	59	--	--	7.18	1.17	3.86	18.65
2010 Custom Index			0.68	--	2.36	--	9.41	--	9.41	--	4.97	--	5.95	--	--	--	--	1.18	3.90	--
Morningstar Category: Target-Date 2000-2010 MF			0.77	--	2.33	--	10.15	--	10.15	--	4.98	--	5.78	--	--	--	--	1.00	4.54	--
SIRT 2015																				
Unit Class I	0.08	01/08/09	0.64	81	2.43	70	9.77	86	9.77	86	5.07	71	6.35	66	--	--	7.98	1.16	4.04	19.92
2015 Custom Index			0.69	--	2.48	--	9.82	--	9.82	--	5.16	--	6.50	--	--	--	--	1.17	4.07	--
Morningstar Category: Target Date 2015 MF			0.78	--	2.62	--	11.29	--	11.29	--	5.36	--	6.47	--	--	--	--	0.98	5.07	--
SIRT 2020																				
Unit Class I	0.08	01/05/09	0.72	68	2.95	57	11.64	77	11.64	77	5.80	61	7.61	33	--	--	8.95	1.03	5.26	21.60
2020 Custom Index			0.79	--	3.00	--	11.69	--	11.69	--	5.88	--	7.77	--	--	--	--	1.04	5.31	--
Morningstar Category: Target Date 2020 MF			0.80	--	2.92	--	12.46	--	12.46	--	5.67	--	6.76	--	--	--	--	0.95	5.52	--
SIRT 2025																				
Unit Class I	0.08	01/08/09	0.82	70	3.60	43	13.97	74	13.97	74	6.75	51	8.80	26	--	--	9.97	1.01	6.30	23.47
2025 Custom Index			0.89	--	3.64	--	13.98	--	13.98	--	6.82	--	8.95	--	--	--	--	1.01	6.36	--
Morningstar Category: Target Date 2025 MF			0.92	--	3.46	--	14.67	--	14.67	--	6.50	--	7.93	--	--	--	--	0.94	6.49	--
SIRT 2030																				
Unit Class I	0.08	01/05/09	0.88	69	4.05	48	15.69	77	15.69	77	7.42	51	9.68	28	--	--	10.60	0.99	7.11	24.73
2030 Custom Index			0.97	--	4.10	--	15.72	--	15.72	--	7.49	--	9.84	--	--	--	--	0.99	7.19	--
Morningstar Category: Target Date 2030 MF			1.00	--	3.98	--	16.57	--	16.57	--	7.22	--	8.74	--	--	--	--	0.93	7.36	--
SIRT 2035																				
Unit Class I	0.08	01/08/09	0.95	70	4.42	50	17.16	79	17.16	79	7.99	51	10.48	28	--	--	11.36	0.98	7.79	26.29
2035 Custom Index			1.05	--	4.48	--	17.16	--	17.16	--	8.02	--	10.60	--	--	--	--	0.97	7.88	--
Morningstar Category: Target-Date 2035 MF			1.05	--	4.38	--	18.43	--	18.43	--	7.87	--	9.66	--	--	--	--	0.92	8.19	--

Past performance is no guarantee of future results. Investment return and principal value will fluctuate, and shares, when redeemed, may be worth more or less than original cost. Fund performance includes the reinvestment of all income and is presented net of all fees.

The values of the target fund will fluctuate up to and after the target date. There is no guarantee the funds will provide adequate income at or through retirement.

Target Date Custom Indices are composed of the Russell 1000 Index, Russell 2000 Index, MSCI EAFE Index (Net), MSCI Emerging Markets Index (Net), FTSE EPRA/NAREIT Developed Index (Net), Bloomberg Commodity Index, Barclays 1-3 Year Government Credit Index, Barclays U.S. Aggregate Bond Index, Barclays Global Aggregate Bond ex-US Hedged Index, Barclays U.S. Treasury: U.S. TIPS Index, and Citigroup 3 Month T-Bill Index.

SIRT Funds Performance

As of 12/31/2017	Exp. Ratio	Inception Date	1 Month %	1 Month Rank	3 Month %	3 Month Rank	YTD %	YTD Rank	1 Year %	1 Year Rank	3 Year %	3 Year Rank	5 Year %	5 Year Rank	10 Year %	10 Year Rank	Since Inception	3 Year Sharpe Ratio	3 Year Std. Deviation	Month End Net Asset Value (NAV) \$
SIRT 2040																				
Unit Class I	0.08	01/05/09	1.01	69	4.77	48	18.52	80	18.52	80	8.46	49	11.08	24	--	--	11.68	0.96	8.45	27.00
2040 Custom Index			1.12	--	4.84	--	18.53	--	18.53	--	8.52	--	11.23	--	--	--	--	0.95	8.54	--
Morningstar Category: Target Date 2040 MF			1.10	--	4.71	--	19.52	--	19.52	--	8.23	--	10.03	--	--	--	--	0.91	8.64	--
SIRT 2045																				
Unit Class I	0.08	01/08/09	1.05	68	5.01	44	19.45	81	19.45	81	8.80	47	11.46	15	--	--	12.09	0.95	8.84	27.87
2045 Custom Index			1.17	--	5.07	--	19.44	--	19.44	--	8.85	--	11.61	--	--	--	--	0.95	8.93	--
Morningstar Category: Target Date 2045 MF			1.13	--	4.90	--	20.51	--	20.51	--	8.55	--	10.45	--	--	--	--	0.91	9.03	--
SIRT 2050																				
Unit Class I	0.08	01/05/09	1.08	68	5.15	39	19.98	77	19.98	77	8.97	43	11.71	14	--	--	12.09	0.95	9.08	27.89
2050 Custom Index			1.19	--	5.21	--	19.98	--	19.98	--	9.04	--	11.88	--	--	--	--	0.94	9.18	--
Morningstar Category: Target Date 2050 MF			1.15	--	5.01	--	20.67	--	20.67	--	8.62	--	10.48	--	--	--	--	0.91	9.07	--
SIRT 2055																				
Unit Class I	0.08	08/29/13	1.10	66	5.29	26	20.51	71	20.51	71	9.15	34	--	--	--	--	11.39	0.94	9.32	15.97
2055 Custom Index			1.22	--	5.34	--	20.50	--	20.50	--	9.21	--	--	--	--	--	--	0.94	9.44	--
Morningstar Category: Target Date 2055 MF			1.16	--	5.04	--	21.08	--	21.08	--	8.79	--	--	--	--	--	--	0.92	9.21	--
SIRT 2060																				
Unit Class I	0.08	12/21/15	1.10	71	5.28	29	20.64	73	20.64	73	--	--	--	--	--	--	16.23	--	--	13.59
2060 Custom Index			1.23	--	5.39	--	20.69	--	20.69	--	--	--	--	--	--	--	--	--	--	--
Morningstar Category: Target Date 2060+ MF			1.17	--	5.13	--	21.27	--	21.27	--	--	--	--	--	--	--	--	--	--	--

Past performance is no guarantee of future results. Investment return and principal value will fluctuate, and shares, when redeemed, may be worth more or less than original cost. Fund performance includes the reinvestment of all income and is presented net of all fees.

The values of the target fund will fluctuate up to and after the target date. There is no guarantee the funds will provide adequate income at or through retirement.

Target Date Custom Indices are composed of the Russell 1000 Index, Russell 2000 Index, MSCI EAFE Index (Net), MSCI Emerging Markets Index (Net), FTSE EPRA/NAREIT Developed Index (Net), Bloomberg Commodity Index, Barclays 1-3 Year Government Credit Index, Barclays U.S. Aggregate Bond Index, Barclays Global Aggregate Bond ex-US Hedged Index, Barclays U.S. Treasury: U.S. TIPS Index, and Citigroup 3 Month T-Bill Index.

Underlying Strategy Performance

Performance of SIRT Funds underlying investment strategies

		Annualized Return Net of Fees ¹ As of December 31, 2017								
		Date Added to SIRT Funds	1 Month	3 Month	YTD	1 Year	3 Year	5 Year	10 Year	Since Inception
Domestic Equity >	BNY Mellon Large Cap Stock Index Fund Instl (Inception: Fund-3/13/09)	11/21/13	1.12	6.59	21.68	21.68	11.21	15.69	--	
	Russell 1000® Index		1.11	6.59	21.69	21.69	11.23	15.71	8.59	
	Morningstar Category: Large Blend		1.20	6.41	20.44	20.44	9.70	14.24	7.61	
	BNY Mellon Small Cap Index Fund Instl (Inception: Fund-8/31/86)	11/21/13	-0.42	3.29	14.61	14.61	9.87	--	--	
	Russell 2000® Index		-0.40	3.34	14.65	14.65	9.96	14.12	8.71	
International Equity >	Morningstar Category: Small Blend		-0.28	3.54	12.28	12.28	8.71	12.99	8.13	
	BNY Mellon International Stock Index Fund Instl (Inception: Fund-10/16/09)	11/24/09	1.11	4.03	25.46	25.46	8.19	7.87	--	
	MSCI EAFE Index (Net)		1.61	4.23	25.03	25.03	7.80	7.90	1.94	
	Morningstar Category: Foreign Large Blend		1.56	3.94	25.12	25.12	7.73	7.27	1.79	
	SSgA Emerging Markets Index Fund A	12/31/13	3.40	7.44	37.13	37.13	8.89	--	--	
Real Assets >	MSCI Emerging Markets Index (Net)		3.59	7.44	37.28	37.28	9.10	4.35	1.68	
	Morningstar Category: Diversified Emerging Markets		3.55	6.27	34.17	34.17	7.95	4.09	1.63	
	BlackRock Developed Real Estate Index Fund E	7/31/09	1.34	3.73	11.13	11.13	5.17	6.80	--	
	FTSE EPRA/NAREIT Developed Index (Net)		1.29	3.60	10.36	10.36	4.44	6.32	3.28	
	Morningstar Category: Global Real Estate		1.98	4.45	15.12	15.12	5.22	6.13	3.04	
Fixed Income >	BlackRock Commodity Index Daily Fund E	6/30/10	2.94	4.60	1.27	1.27	-5.43	-8.80	--	
	Bloomberg Commodity Index		2.99	4.71	1.70	1.70	-5.03	-8.45	-6.83	
	Morningstar Category: Commodities Broad Basket		2.96	5.67	3.66	3.66	-4.34	-8.27	-8.04	
	SSgA U.S. Short-Term Government/Credit Bond Index Fund A	1/1/15	0.04	-0.25	0.74	0.74	0.82	--	--	
	Bloomberg Barclays 1-3 Year US Government Credit Index		0.03	-0.21	0.84	0.84	0.93	0.84	1.85	
Cash Equivalents >	Morningstar Category: Short-Term Bond		0.08	-0.04	1.73	1.73	1.47	1.15	2.31	
	BNY Mellon U.S. Aggregate Bond Index Fund Instl	3/25/09	0.45	0.35	3.42	3.42	2.11	1.97	--	
	Bloomberg Barclays U.S. Aggregate Bond Index		0.46	0.39	3.54	3.54	2.24	2.10	4.01	
	Morningstar Category: Intermediate-Term Bond		0.38	0.29	3.71	3.71	2.22	2.05	4.06	
	BlackRock Global Aggregate Bond Fund Ex-USD	1/1/15	0.01	1.06	2.25	2.25	2.69	--	--	
Real Assets >	Bloomberg Barclays Global Aggregate Bond ex-US Hedged Index		0.05	1.13	2.48	2.48	2.90	3.70	4.23	
	Morningstar Category: World Bond		0.25	0.64	6.87	6.87	2.01	0.91	3.47	
	State Street U.S. Government Short Term Investment Fund	1/5/09	0.11	0.28	0.85	0.85	0.40	0.26	0.41	
	Citigroup 3 Month T-Bill Index		0.10	0.28	0.84	0.84	0.38	0.24	0.34	
	BlackRock U.S. TIPS Index Fund E	1/5/09	0.92	1.27	3.03	3.03	2.06	0.08	--	
Real Assets >	Bloomberg Barclays U.S. Treasury Inflation Protected Securities (TIPS) Index		0.92	1.26	3.01	3.01	2.05	0.13	3.53	
	Morningstar Category: Inflation Protected Bond		0.81	1.14	2.72	2.72	1.63	-0.18	2.99	

Past performance is no guarantee of future results. Investment return and principal value will fluctuate, and shares, when redeemed, may be worth more or less than original cost.

¹Performance data is measured from the first full month following the date each strategy was added to the SIRT Funds, except for mutual funds and Schwab Bank Collective Trust Funds. Schwab Bank Collective Trust Funds data reflects the first full month following the Fund's inception date.

Sub-advised strategy returns are net of sub-advisor management fees.

Source: Morningstar, Inc. See the Disclosures at the end of the document for important information.

SIRT Funds Update

SIRT Funds Update

On January 16th, Charles Schwab Bank announced the release of the SIRT Funds 2018 policy allocations. There are no changes to the funds' intended glide path strategy, and each of the funds will continue to transition from equity to fixed income and cash equivalents.

Charles Schwab Bank reviews the strategic asset allocation framework and capital market expectations on an annual basis, seeking opportunities to further enhance the funds on a long-term basis for investors.

In 2018, the funds will make the following adjustments within the equity allocation of each portfolio: non-U.S. developed and emerging markets equities will be increased through a like reduction in U.S. equities and commodities. The shift ranges from 0.5% in the earlier dated funds to 5.5% in the later dated funds. All other strategic asset allocations positions and our planned annual adjustments from equity into fixed income remain consistent with our long term strategic strategy.

For more information, please see the full policy allocation announcement on the Charles Schwab Bank website:

http://www.schwabbankfunds.com/public/file/P-11081353/FINAL-2018_Policy_Allocation_Announcement.pdf

Appendix

Glide path capital market expectations

Custom index allocation

Schwab Bank Collective Trust Funds offering

Capital market expectations

ASSET CLASS	LONG TERM FORECAST ASSUMPTIONS	
	Approx. return	Approx. standard deviation
<i>Inflation</i>	2-2.5%	--
Cash Equivalents	1.5-2%	0-0.5%
Short-Term Bond	2-2.5%	2-2.5%
World Bond ¹	1-2%	3-3.5%
Inflation-Protected Bond (US TIPS)	2-3%	5.5-7%
Intermediate-Term Bond	2.5-3%	3.5-4%
Commodities ¹	3.5-5%	17-20%
Domestic Equity (Large Cap)	5.5-7%	14-17%
Global Real Estate ²	6-7%	18-22%
International Equity	6-9%	17-19%
Domestic Equity (Small Cap)	6-8%	19-22%
Diversified Emerging Markets	7.5-10%	22-25%

BASE CASE ASSUMPTIONS			
Age range	Deferral %	Employer match	Annual salary increase
25-35	4%	2%	4%
36-45	5%	2.5%	4%
46-55	6%	3%	3%
56-65	7%	3.5%	2%

¹The Schwab Target Index Funds do not hold World Bond or Commodities strategies. The Schwab Target Funds do not hold a Commodities strategy.

²Global Real Estate is used as a proxy for Real Estate within the Schwab Target Index Funds.

Expected returns are compounded annual returns. Actual returns may be higher or lower.

Employer match contribution is assumed to be 50% of employee deferral. Social Security and post-retirement income is not included in base case assumptions.

Assumptions are reviewed and revised at least annually.

Source: Charles Schwab Investment Management, Inc.

SIRT Funds 2017 policy allocation by asset class

ASSET CLASS	UNDERLYING INVESTMENT	2060	2055	2050	2045	2040	2035	2030	2025	2020	2015	2010
Equity		95.0	94.0	91.5	88.8	84.3	77.4	70.1	61.2	49.2	39.3	37.1
Domestic Equity	BNY Mellon Large Cap Stock Index Fund Instl	54.2	53.8	52.8	51.7	49.7	46.6	43.1	38.4	31.7	26.5	25.0
Domestic Equity	BNY Mellon Small Cap Stock Index Fund Instl	7.4	7.2	6.9	6.5	5.9	5.0	4.1	3.2	2.3	1.8	1.6
International Equity	BNY Mellon Intl Stock Index Fund Instl	22.0	21.8	21.2	20.6	19.5	17.9	16.2	14.1	11.3	9.1	8.6
Emerging Markets	SSgA Emerging Markets Index Fund A	4.9	4.8	4.4	4.1	3.6	2.9	2.2	1.5	0.8	0.0	0.0
Global Real Estate	BlackRock Developed Real Estate Index Fund E	4.8	4.7	4.6	4.4	4.2	3.9	3.5	3.1	2.5	2.0	1.9
Commodities	BlackRock Commodity Index Daily Fund E	1.7	1.7	1.6	1.5	1.4	1.2	1.1	0.8	0.6	0.0	0.0
Fixed Income		4.5	5.4	7.7	10.1	14.1	20.3	26.9	34.9	45.4	54.0	55.9
Short-Term Bond	SSgA U.S. Short-Term Government/Credit Bond Index Fund A	0.5	0.6	0.9	1.2	1.7	2.6	3.7	5.1	7.2	9.2	9.7
Intermediate-Term Bond	BNY Mellon U.S. Aggregate Bond Index Fund Instl	3.3	3.9	5.5	7.2	10.1	14.4	19.0	24.0	30.9	36.4	37.6
Inflation-Protected Bond (U.S. TIPS)	BlackRock U.S. TIPS Index Fund E	0.0	0.0	0.0	0.0	0.0	0.0	0.0	1.1	3.5	6.1	6.3
World Bond	BlackRock Global Aggregate Bond Fund Ex-USD	0.8	0.9	1.3	1.7	2.3	3.3	4.3	4.7	3.8	2.4	2.3
Cash Equivalents		0.5	0.6	0.9	1.1	1.6	2.3	3.0	3.9	5.4	6.7	7.1
Cash Equivalents	State Street U.S. Government Short Term Investment Fund	0.5	0.6	0.9	1.1	1.6	2.3	3.0	3.9	5.4	6.7	7.1

Percentages may not total 100% due to rounding.

The above represent policy allocations for 2017, effective February 1, 2017; actual allocations may differ slightly from policy allocation at any point in time.

SIRT Funds 2018 policy allocation by asset class

ASSET CLASS	UNDERLYING INVESTMENT	2060	2055	2050	2045	2040	2035	2030	2025	2020	2015	2010
Equity		95.0	93.5	91.0	88.1	83.0	76.0	68.4	59.1	46.3	38.9	36.5
Domestic Equity	BNY Mellon Large Cap Stock Index Fund Instl	49.8	49.3	48.4	47.4	45.5	42.6	39.3	34.8	28.1	24.6	23.4
Domestic Equity	BNY Mellon Small Cap Stock Index Fund Instl	6.8	6.6	6.3	5.9	5.3	4.5	3.6	2.9	2.0	1.6	1.5
International Equity	BNY Mellon Intl Stock Index Fund Instl	26.1	25.7	24.9	24.1	22.7	20.7	18.7	16.1	12.7	10.8	9.8
Emerging Markets	SSgA Emerging Markets Index Fund A	6.3	6.1	5.6	5.2	4.4	3.5	2.6	1.7	0.7	0.0	0.0
Global Real Estate	BlackRock Developed Real Estate Index Fund E	4.8	4.7	4.5	4.4	4.2	3.8	3.4	3.0	2.3	1.9	1.8
Commodities	BlackRock Commodity Index Daily Fund E	1.2	1.2	1.2	1.1	1.1	1.0	0.8	0.7	0.5	0.0	0.0
Fixed Income		4.5	5.9	8.1	10.7	15.3	21.6	28.4	36.8	48.0	54.3	56.3
Short-Term Bond	SSgA U.S. Short-Term Government/Credit Bond Index Fund A	0.5	0.7	0.9	1.3	1.9	2.8	3.9	5.5	7.8	9.3	9.8
Intermediate-Term Bond	BNY Mellon U.S. Aggregate Bond Index Fund Instl	3.3	4.2	5.8	7.7	10.9	15.3	20.0	25.3	32.5	36.6	37.9
Inflation-Protected Bond (U.S. TIPS)	BlackRock U.S. TIPS Index Fund E	0.0	0.0	0.0	0.0	0.0	0.0	0.0	1.4	4.2	6.1	6.3
World Bond	BlackRock Global Aggregate Bond Fund Ex-USD	0.8	1.0	1.3	1.8	2.5	3.5	4.5	4.6	3.4	2.4	2.3
Cash Equivalents		0.5	0.7	0.9	1.2	1.7	2.4	3.2	4.2	5.7	6.7	7.2
Cash Equivalents	State Street U.S. Government Short Term Investment Fund	0.5	0.7	0.9	1.2	1.7	2.4	3.2	4.2	5.7	6.7	7.2

Percentages may not total 100% due to rounding.

The above represent policy allocations for 2018, effective January 31, 2108; actual allocations may differ slightly from policy allocation at any point in time.

2017 custom index allocations

SIRT Funds 2017 Custom Index Allocations	2060	2055	2050	2045	2040	2035	2030	2025	2020	2015	2010
Russell 1000 Index	54.2	53.8	52.8	51.7	49.7	46.6	43.1	38.4	31.7	26.5	25.0
Russell 2000 Index	7.4	7.2	6.9	6.5	5.9	5.0	4.1	3.2	2.3	1.8	1.6
MSCI EAFE Index (Net)	22.0	21.8	21.2	20.6	19.5	17.9	16.2	14.1	11.3	9.1	8.6
MSCI Emerging Markets Index (Net)	4.9	4.8	4.4	4.1	3.6	2.9	2.2	1.5	0.8	0.0	0.0
FTSE EPRA/NAREIT Developed Index (Net)	4.8	4.7	4.6	4.4	4.2	3.9	3.5	3.1	2.5	2.0	1.9
Bloomberg Commodity Index	1.7	1.7	1.6	1.5	1.4	1.2	1.1	0.8	0.6	0.0	0.0
Bloomberg Barclays U.S. 1-3 Year Government/Credit Bond Index	0.5	0.6	0.9	1.2	1.7	2.6	3.7	5.1	7.2	9.2	9.7
Bloomberg Barclays U.S. Aggregate Bond Index	3.3	3.9	5.5	7.2	10.1	14.4	19.0	24.0	30.9	36.4	37.6
Bloomberg Barclays U.S. Treasury Inflation Protected Securities (TIPS) Index	0.0	0.0	0.0	0.0	0.0	0.0	0.0	1.1	3.5	6.1	6.3
Bloomberg Barclays Global Aggregate Bond ex-U.S. Hedged Index	0.8	0.9	1.3	1.7	2.3	3.3	4.3	4.7	3.8	2.4	2.3
Citigroup 3 Month T-Bill Index	0.5	0.6	0.9	1.1	1.6	2.3	3.0	3.9	5.4	6.7	7.1

The above represent target policy allocations for 2017, effective February 1, 2017. Percentages listed may not total 100% due to rounding.

The custom index is a custom blended index developed by Charles Schwab Investment management, Inc. based on each fund's asset allocation glide schedule and will become more conservative as time elapses.

Source: Charles Schwab Investment Management, Inc.

2018 custom index allocations

SMRT & SIRT Funds 2018 Custom Index Allocations	2060	2055	2050	2045	2040	2035	2030	2025	2020	2015	2010	Income ¹
Russell 1000 Index	49.8	49.3	48.4	47.4	45.5	42.6	39.3	34.8	28.1	24.6	23.4	17.1
Russell 2000 Index	6.8	6.6	6.3	5.9	5.3	4.5	3.6	2.9	2.0	1.6	1.5	0.9
MSCI EAFE Index (Net)	26.1	25.7	24.9	24.1	22.7	20.7	18.7	16.1	12.7	10.8	9.8	5.7
MSCI Emerging Markets Index (Net)	6.3	6.1	5.6	5.2	4.4	3.5	2.6	1.7	0.7	0.0	0.0	0.0
FTSE EPRA/NAREIT Developed Index (Net)	4.8	4.7	4.5	4.4	4.2	3.8	3.4	3.0	2.3	1.9	1.8	1.3
Bloomberg Commodity Index	1.2	1.2	1.2	1.1	1.1	1.0	0.8	0.7	0.5	0.0	0.0	0.0
Bloomberg Barclays U.S. 1-3 Year Government/Credit Bond Index	0.5	0.7	0.9	1.3	1.9	2.8	3.9	5.5	7.8	9.3	9.8	12.4
Bloomberg Barclays U.S. Aggregate Bond Index	3.3	4.2	5.8	7.7	10.9	15.3	20.0	25.3	32.5	36.6	37.9	43.9
Bloomberg Barclays U.S. Treasury Inflation Protected Securities (TIPS) Index	0.0	0.0	0.0	0.0	0.0	0.0	0.0	1.4	4.2	6.1	6.3	7.5
Bloomberg Barclays Global Aggregate Bond ex-U.S. Hedged Index	0.8	1.0	1.3	1.8	2.5	3.5	4.5	4.6	3.4	2.4	2.3	1.9
Citigroup 3 Month T-Bill Index	0.5	0.7	0.9	1.2	1.7	2.4	3.2	4.2	5.7	6.7	7.2	9.4

The above represent target policy allocations for 2018, effective January 31, 2018. Percentages listed may not total 100% due to rounding.

The custom index is a custom blended index developed by Charles Schwab Investment management, Inc. based on each fund's asset allocation glide schedule and will become more conservative as time elapses.

¹Available in the SMRT Funds.

Source: Charles Schwab Investment Management, Inc.

Schwab Bank Collective Trust Funds offering

Funds	Unit Class	Expense	Revenue Credit	Minimum Investment/ Availability
SMRT Fund Series	I	0.89%	0.44%	No minimum
	II	0.69%	0.24%	
	III	0.54%	0.09%	
	IV	0.45%	0.00%	
	V	0.35%	0.00%	\$100MM initial investment or plan assets >\$400MM
	VI	0.33%	0.00%	\$1Billion
SIRT Fund Series	I	0.08%	0.00%	No minimum
Schwab Large Cap Value ITF	Select	0.42%	0.00%	No minimum
Schwab Large Cap Growth ITF	Retirement	0.74%	0.20%	No minimum
	Institutional	0.54%	0.00%	
Schwab Diversified International ITF	Retirement	1.04%	0.25%	No minimum
	Institutional	0.79%	0.00%	
Schwab Core Plus Fixed Income ITF	I	0.55%	0.25%	No minimum
	III	0.35%	0.05%	

Disclosures

Past performance is no guarantee of future results. Investment return and principal value will fluctuate, and shares, when redeemed, may be worth more or less than original cost. Fund performance includes the reinvestment of all income and is presented net of all fees.

The values of the target fund will fluctuate up to and after the target date. There is no guarantee the funds will provide adequate income at or through retirement.

The material in this presentation is based on information from a variety of sources we consider reliable, but we do not represent that the information is accurate or complete. Errors and omissions can occur. None of the information constitutes a recommendation or a solicitation of an offer to buy or sell any security by Schwab Bank or any of its affiliates. Please review the trust and participation agreement, Schwab Bank Fund Fact Sheet and other disclosure materials before making any decision to invest in the Funds. Performance data quoted is past performance and is no indication (or "guarantee") of future results. Current performance may be lower or higher. Investment return and principal value will fluctuate, and shares, when redeemed, may be worth more or less than original cost.

©2017 by Morningstar, Inc. All rights reserved. The information contained herein is the proprietary information of Morningstar, Inc., and may not be copied or redistributed for any purpose and may only be used for non-commercial, personal purposes. The information contained herein is not represented or warranted to be accurate, correct, complete or timely. Morningstar, Inc. shall not be responsible for investment decisions, damages or other losses resulting from use of this information. Past performance is no guarantee of future performance. Morningstar, Inc. has not granted consent for it to be considered or deemed an "expert" under the Securities Act of 1933.

Collective Trust Funds Disclosures

The Schwab Managed Retirement Trust Funds™, Schwab Indexed Retirement Trust Funds® and Schwab Institutional Trust Funds® are collective trust funds maintained by Charles Schwab Bank (Schwab Bank), as trustee of the Funds. They are available for investment only by eligible retirement plans and entities. Schwab Bank Collective Trust Funds (Funds) are not insured by FDIC or any other type of deposit insurance; are not deposits or other obligations of, and are not guaranteed by Schwab Bank or any of its affiliates; and involve investment risks, including possible loss of principal invested. The Funds are not mutual funds and are exempt from registration and regulation under the Investment Company Act of 1940 (the "1940 Act"), and their units are not registered under the Securities Act of 1933, or applicable securities laws of any state or other jurisdiction. Unit holders of the Funds are not entitled to the protections of the 1940 Act. The decision to invest in the Funds should be carefully considered. The Funds' unit values will fluctuate and may be worth more or less when redeemed, so unit holders may lose money. The Funds are not sold by prospectus and are not available for investment by the public; Fund prices are not quoted in newspapers.

Fund Affiliations

The Charles Schwab Corporation provides services to retirement and other employee benefit plans and participants through its separate but affiliated companies and subsidiaries: Charles Schwab Bank (Schwab Bank); Charles Schwab & Co., Inc.; Charles Schwab Investment Management, Inc. (CSIM); and Schwab Retirement Plan Services, Inc. Trust and custody products and service are offered by Schwab Bank. Brokerage products and services are offered by Charles Schwab & Co., Inc. (Member SIPC). Schwab Retirement Plan Services, Inc. provides recordkeeping and related services to retirement plans. CSIM provides investment research, advisory and fund administration services to Schwab Bank and the Funds. CSIM is an investment adviser registered with the Securities and Exchange Commission.

The Schwab Bank Collective Trust Funds select investments based on advice received from, or products offered by industry-recognized investment management firms ("sub-advisors"). The Funds access investment strategies through various investment vehicles including, but not limited to, collective trust funds, mutual funds, and/or exchange-traded funds and may also access strategies through sub-advisors engaged by Charles Schwab Bank to advise one or more separate accounts of a Fund. Exposure to some strategies may be indirect through investment in other Schwab Bank Collective Trust Funds. The SMRT Funds invest in the Schwab Institutional Large Cap Value Trust Fund, Schwab Institutional Large Cap Growth Trust Fund, Schwab Institutional Small Cap Fund, Schwab Institutional International Diversified Trust Fund, and Schwab Institutional Core Plus Fixed Income Trust Fund.

Sub-Advised Strategies – Disclosures

Prior to April 2009, the BNY Mellon Large Cap Index Fund Insl invested in a securities-lending strategy. As of April 2009, the Fund changed to a non-lending strategy. Data reflects performance of the non-lending strategy.

Disclosures

Significant Risks of the Funds

Investment returns will fluctuate and are subject to market volatility, so that an investor's shares, when redeemed or sold, may be worth more or less than their original cost.

Cash Equivalents Risk. Cash Equivalents investments are cash management strategies that seek to prevent the loss of an investment's total value. Although a cash management product may seek to maintain a stable or constant net asset value, there can be no assurance it will do so.

Commodities Risk. Since a commodity fund is typically not diversified and focuses its investments in a single commodity or basket of commodities, the fund may involve a greater degree of risk than an investment in other mutual funds with greater diversification.

Diversified Funds Risk. Diversification strategies do not ensure a profit and do not protect against losses in declining markets. Schwab Bank's portfolio management process includes an effort to monitor and manage risk, but should not be confused with and does not imply either low risk or the ability to control risk.

Fixed Income Risk. Fixed income securities are subject to increased loss of principal during periods of rising interest rates and to various other risks including changes in credit quality, market valuations, liquidity, prepayments, early redemption, corporate events, and tax ramifications.

Inflation-Protected Security Risk. Treasury Inflation Protected Securities (TIPS) are inflation-linked securities issued by the U.S. Government whose principal value is adjusted periodically in accordance with the rise and fall in the inflation rate. Thus, the dividend amount payable is also impacted by variations in the inflation rate as it is based upon the principal value of the bond. It may fluctuate up or down. Repayment at maturity is guaranteed by the U.S. Government and may be adjusted for inflation to become the greater of either the original face amount at issuance or that face amount plus an adjustment for inflation.

Interest Rate Risk. Interest rates will rise and fall over time. During periods when interest rates are low, an underlying strategy's yield and total return also may be low. Changes in interest rates also may affect the strategy's share price: a sharp rise in interest rates could cause the strategy's share price to fall. The longer the strategy's duration, the more sensitive to interest rate movements its share price is likely to be.

International Risk. International investments involve additional risks, which include differences in financial accounting standards, currency fluctuations, political instability, foreign taxes and regulations, and the potential for illiquid markets. Investing in emerging markets may accentuate these risks.

Global Real Estate Risk. International investing does pose special risks including currency fluctuation, economic and political risks not found in investments that are solely domestic. Risks of the REIT's are similar to those associated with direct ownership of real estate, such as changes in real estate values and property taxes, interest rates, cash flow of underlying real estate assets, supply and demand, and the management skill and credit worthiness of the issuer.

Securities Lending Risk. Each Fund's Declaration of Trust authorizes securities lending and the Funds may invest in underlying funds that participate in securities lending. There are various risks associated with securities lending including but not limited to the risk that a borrower fails to return some or all of the securities in a timely manner and investments acquired with cash collateral may decline in value. Charles Schwab Bank, in coordination with each Fund's underlying investment sub-advisors, actively monitors any securities lending activity to minimize any potential impact to the Funds.

Target Date Funds Risk. Diversification and asset allocation strategies do not ensure a profit and cannot protect against losses in a declining market. The Funds are subject to market volatility and risks associated with the underlying investments. Risks include exposure to international and emerging markets, small company and sector equity securities, and fixed income securities subject to changes in inflation, interest rates, market valuations, liquidity, prepayments, and early redemption. The funds are built for investors who expect to start gradual withdrawals of fund assets on the target date, to begin covering expenses in retirement. The principal value of the funds is not guaranteed at any time, and will continue to fluctuate up to and after the target date. There is no guarantee the funds will provide adequate income at or through retirement.

Disclosures

Index Descriptions

Indexes are unmanaged, do not incur management expenses and cannot be invested in directly.

The **Bloomberg Barclays 1-3 Year US Government Credit Index** is a subset of US Government/Credit Index that is the non-securitized component of the US Aggregate Index. The index includes US Treasuries, Government-Related issues (e.g., US agency, sovereign, supranational, and local authority debt), and USD Corporates with a remaining maturity of 1-3 years.

The **Bloomberg Barclays 1-5 Year U.S. Aggregate Bond Index** is an unmanaged sub-index of securities with maturities of 1-5 years based on the Barclays Capital U.S. Aggregate Bond Index. The Barclays Capital U.S. Aggregate Bond Index represents securities that are SEC registered, taxable, and dollar denominated. The index covers the U.S. investment grade fixed rate bond market, with index components for government and corporate securities, mortgage pass-through securities, and asset backed securities.

The **Bloomberg Barclays Global Aggregate Bond ex-US Hedged Index** is a subset of the flagship Global Aggregate Index that measures multi-currency global investment grade debt but excludes those denominated in USD. This multi-currency benchmark includes fixed-rate treasury, government-related, corporate and securitized bonds from both developed and emerging markets issuers. The Global Aggregate ex USD Index is largely comprised of the regional Pan-European Aggregate and Asian-Pacific Aggregate Indices. In addition to securities from these two benchmarks, the index also includes investment grade Euro-Yen and Canadian securities.

The **Bloomberg Barclays U.S. Aggregate Bond Index** represents securities that are SEC registered, taxable, and dollar denominated. The index covers the U.S. investment grade fixed rate bond market, with index components for government and corporate securities, mortgage pass-through securities, and asset backed securities.

The **Bloomberg Barclays U.S. Government/Credit Index** is the non-securitized component of the U.S. Aggregate Index. includes Treasuries (i.e., public obligations of the U.S. Treasury that have remaining maturities of more than one year), Government-Related issues (i.e., agency, sovereign, supranational, and local authority debt), and Corporates.

The **Bloomberg Barclays U.S. Treasury Inflation-Protected Securities (TIPS) Index** is a market value-weighted index that tracks inflation-protected securities issued by the U.S. Treasury. To prevent the erosion of purchasing power, TIPS are indexed to the non-seasonally adjusted Consumer Price Index for All Urban Consumers, or the CPI-U (CPI).

The **Bloomberg Commodity Index** is calculated on an excess return basis and composed of futures contracts on 22 physical commodities. It reflects the return of underlying commodity futures price movements.

The **Citigroup U.S. 3-month Treasury Bill Index** is an index that measures monthly total return equivalents of yield averages that are not marked to market. The Three-Month Treasury Bill Index consists of the last three three-month Treasury bill issues.

The **CRSP (Center for Research in Security Prices) US Mid Cap Index** is an index that targets inclusion of the U.S. companies that fall between the top 70%-85% of investable market capitalization.

The **FTSE EPRA/NAREIT Developed Index (Net)** is designed to track the performance of listed real estate companies and REITS worldwide. This series approximates the minimum possible dividend reinvestment.

The **MSCI All Country World (ACWI) ex USA Index (Net)** is a free float-adjusted market capitalization index that is designed to measure equity market performance in the global developed and emerging markets with the exclusion of the U.S.-based companies. This series approximates the minimum possible dividend reinvestment. The MSCI All Country World (ACWI) ex USA Value Net Index and MSCI All Country World (ACWI) ex USA Growth Net Index are based on the MSCE All Country World (ACWI) ex USA Net Index.

The **MSCI All Country World (ACWI) ex USA Small Cap Index (Net)** is a free float-adjusted market capitalization index that is designed to measure equity market performance of small capitalization global developed and emerging markets with the exclusion of the U.S.-based companies. This series approximates the minimum possible dividend reinvestment. The MSCI All Country World (ACWI) ex USA Small Cap Growth Net Index is based on a traditional market cap weighted parent index, the MSCI World ex USA Small Cap Index.

Disclosures

Index Descriptions (continued)

The **MSCI EAFE® (Europe, Australasia, Far East) Index (Net)** is a free float-adjusted market capitalization index that is designed to measure developed market equity performance, excluding the US & Canada. This series approximates the minimum possible dividend reinvestment.

The **MSCI Emerging Markets Index (Net)** is a free float-adjusted market capitalization index that is designed to measure emerging markets equity performance. This series approximates the minimum possible dividend reinvestment.

The **MSCI US Mid Cap 450 Index** represents the universe of medium capitalization companies in the US equity market. This index targets for inclusion 450 companies and represents, as of October 29, 2004, approximately 15% of the capitalization of the US equity market.

The **MSCI World ex USA Small Cap Index (Net)** captures small cap representation across 23 of 24 Developed Markets (DM) countries (excluding the United States). With 2,485 constituents, the index covers approximately 14% of the free float-adjusted market capitalization in each country. The MSCI World ex USA Small Cap Value Weighted Index is based on a traditional market cap weighted parent index, the MSCI World ex USA Small Cap Index.

The **Russell indices** are market-capitalization weighted and subsets of the Russell 3000® Index, which contains the largest 3,000 companies incorporated in the United States and represents approximately 98% of the investable U.S. equity market. The **Russell 2000® Index** is composed of the 2000 smallest companies in the Russell 3000 Index. The Russell 2000® Growth Index contains those Russell 2000 securities with a greater-than-average growth orientation. The Russell 2000® Value Index contains those Russell 2000 securities with a less-than-average growth orientation. The **Russell 1000® Index** is composed of the 1000 largest companies in the Russell 3000® Index. The Russell 1000® Growth Index contains those Russell 1000 securities with a greater-than-average growth orientation. The Russell 1000® Value Index contains those Russell 1000 securities with a less-than-average growth orientation.

Definitions

Sharpe Ratio: Developed by Professor William F. Sharpe, a measure of reward per unit of risk - the higher the Sharpe Ratio, the higher return per unit of risk. It is a portfolio's excess return over the risk-free rate divided by the portfolio's standard deviation. The portfolio's excess return is its geometric mean return minus the geometric mean return of the risk-free instrument (by default, t-bills).

Standard Deviation (%): A widely recognized measure of volatility of an investment portfolio, or how widely monthly returns vary from a portfolio's long-term average annual total return.

©2017 Charles Schwab Bank. All rights reserved. For institutional use only. (0118-8LNH) MKT91920-08

00206514

Disclosures—Schwab Funds*

*Schwab Funds are the Schwab Target Funds and Schwab Target Index Funds, mutual funds maintained by Charles Schwab Investment Management, Inc.

Investors should consider carefully information contained in the prospectus, including investment objectives, risks, charges and expenses. You can request a prospectus by visiting csimfunds.com. Please read the prospectus carefully before investing.

Target date index fund asset allocations are subject to change over time in accordance with each fund's prospectus. **The principal value of the funds is not guaranteed at any time, and will continue to fluctuate up to and after the target date. There is no guarantee the funds will provide adequate income at or through retirement. The funds are built for investors who expect to start gradual withdrawals of fund assets on the target date, to begin covering expenses in retirement.**

The investment risks of the funds will change as asset allocations change. Investors should consider risk tolerance and personal financial conditions along with age and retirement date when investing in the funds. Investment returns will fluctuate and are subject to market volatility, so that an investor's shares, when redeemed or sold, may be worth more or less than their original cost.

The funds are subject to market volatility and risks associated with the underlying investments. Risks include exposure to international and emerging markets, small company and sector equity securities, and fixed income securities subject to changes in inflation, market valuations, liquidity, prepayments, and early redemption.

Charles Schwab Investment Management, Inc. (CSIM), the investment advisor for Schwab Funds, and Charles Schwab & Co., Inc. (Schwab), Member SIPC, the distributor for Schwab Funds, are separate but affiliated companies and subsidiaries of The Charles Schwab Corporation.

This information is being furnished as educational and is not intended to constitute investment advice. This material is intended solely for institutional use. Readers are expected to consult with their legal or financial advisors as applicable.

The material in this presentation is based on information from a variety of sources we consider reliable, but we do not represent that the information is accurate or complete. Errors and omissions can occur. None of the information constitutes a recommendation by Charles Schwab Investment Management, Charles Schwab Bank, or their affiliates or a solicitation of an offer to buy or sell any securities.

©2017 by Morningstar, Inc. All rights reserved. The information contained herein is the proprietary information of Morningstar, Inc., and may not be copied or redistributed for any purpose and may only be used for non-commercial, personal purposes. The information contained herein is not represented or warranted to be accurate, correct, complete or timely. Morningstar, Inc. shall not be responsible for investment decisions, damages or other losses resulting from use of this information. Past performance is no guarantee of future performance. Morningstar, Inc. has not granted consent for it to be considered or deemed an "expert" under the Securities Act of 1933.